

# Omada Lite L3 Managed Switch Datasheet

---

## SG5452XMPP V1.20

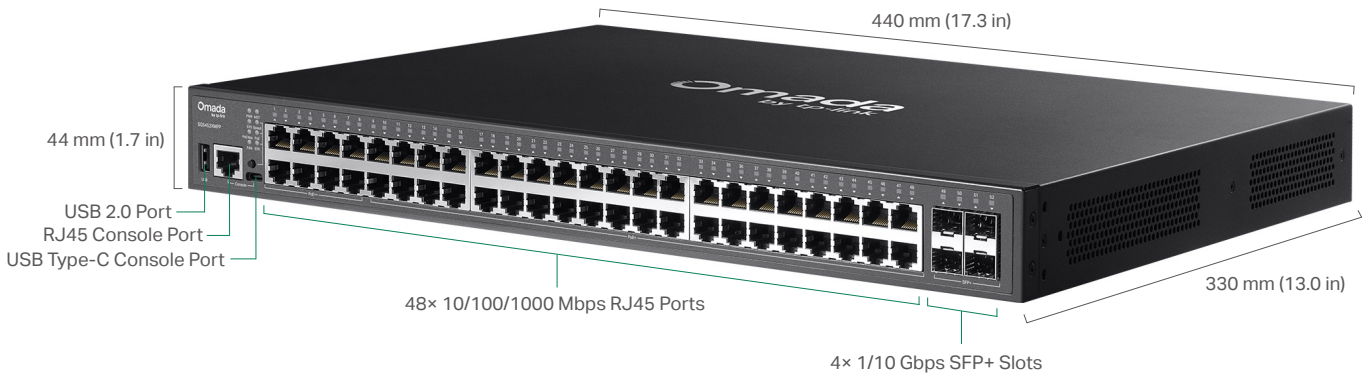
Omada 48-Port Gigabit Stackable Lite L3 Managed PoE++ Switch with 4× 10G Slots



## Highlights

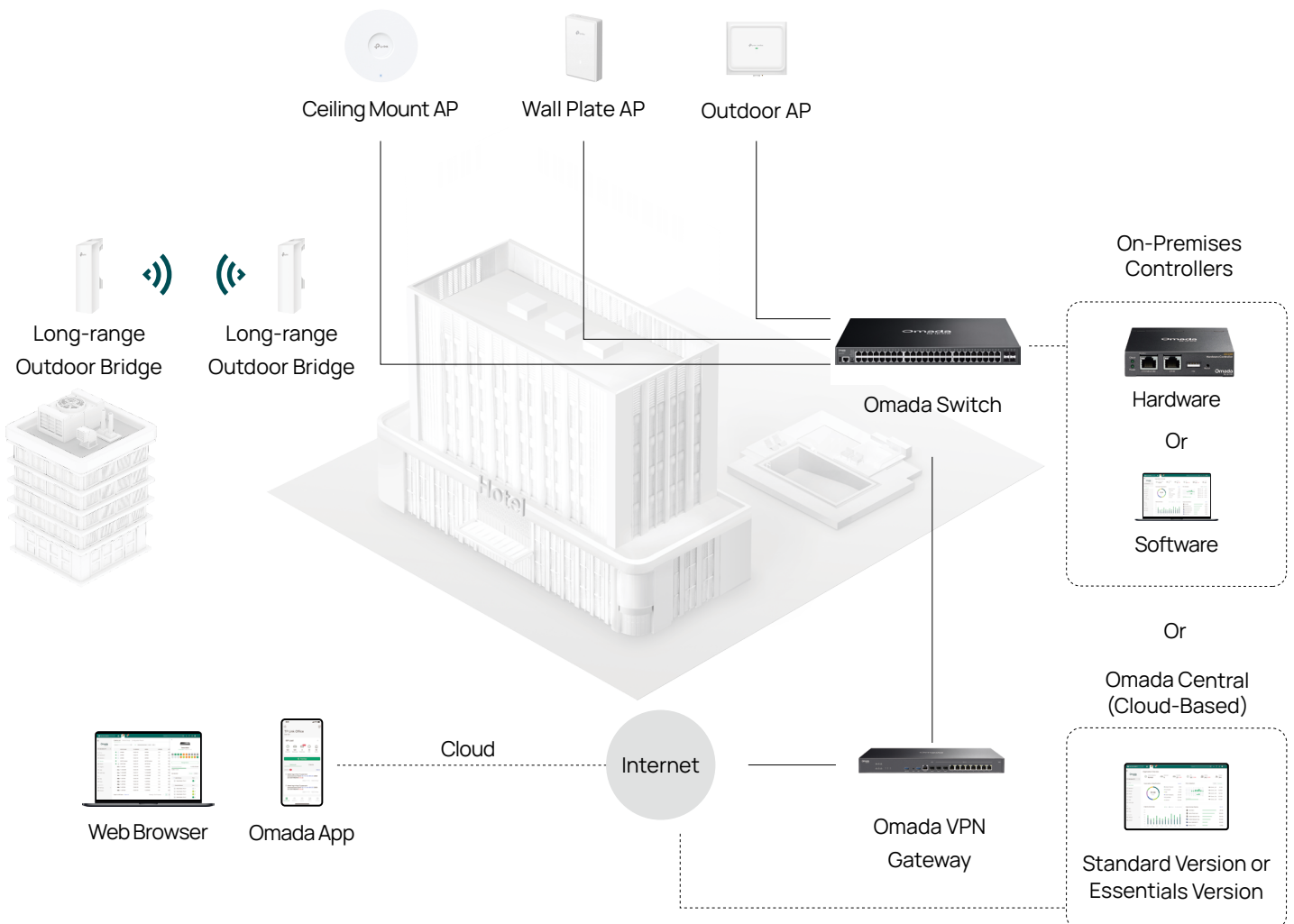
- 8× Gigabit 802.3af/at/bt PoE++ ports (Max 90W per port)
- 40× Gigabit 802.3af/at PoE+ ports (Max 30W per port)
- 4× 10 Gbps SFP+ slots
- Up to 770W total PoE budget\*
- Fast PoE and Perpetual PoE
- Physical stacking up to 4 units for built-in redundancy and performance
- L3 features: RIP, OSPF, VRRP, Static Routing, and DHCP Server/Relay
- Security strategies: ACL, Port Security, DoS Defend, 802.1X
- ERPS supports rapid protection and recovery in a ring topology
- Centralized cloud management via the Omada SDN controller
- Standalone management via web, CLI, SNMP, and RMON

# Product Picture



# Omada Solution

Omada's Software Defined Networking (SDN) platform integrates network devices, including access points, switches, and gateways, providing 100% centralized cloud management. Omada creates a highly scalable network—all controlled from a single interface.



 **Hassle-Free Cloud or On-Premises Controllers**

 **Multi-Site Cloud Management**

 **Zero-Touch Provisioning (ZTP)<sup>†</sup>**

 **Intelligent Monitoring**

# Specifications

Hardware Features & Performance			
Model		SG5452XMPP V1.20	
General	Interface	48× 10/100/1000 Mbps RJ45 Ports 4× 1/10 Gbps SFP+ Slots**	
	Console Ports	1× RJ45 + 1× USB Type-C	
	USB Ports	1× USB 2.0	
	Flash	1× 4 MB Nor + 1× 512 MB NAND	
	DRAM	1 GB DDR	
	Processor	Dual-Core ARM @1.2GHz CPU	
PoE	PoE Standard	802.3af/at/bt, supporting perpetual PoE and fast PoE	
	PoE Port	8 Gigabit PoE++ RJ45 Ports (up to 90 W per Port) 40 Gigabit PoE+ RJ45 Ports (up to 30 W per Port)	
	PoE Power Budget	770 W	
Performance	Switching Capacity	176 Gbps	
	Forwarding Bandwidth	88 Gbps	
	Packet Forwarding Rate	130.94 Mpps	
	MAC Address Table	16 K	
	Packet Buffer	12 Mbit	
	Stacking Port	10G SFP+ slot (all uplink ports can be used as stacking ports)	
	Stacking Bandwidth	Up to 40 Gbps (max 2 stacking ports)	
	Max Stacking Number	4	
	Compatible Models for Stacking	SG5428XF V1.20, SG5428X V1.20, SG5428XMPP V1.20, SG5452X V1.20, SG5452XMPP V1.20	
	Transmission Method	Store and Forward	
	Jumbo Frame	9 KB	
Physical & Environment	Power Supply	100-240 V~ 50/60 Hz	
	Max Power Consumption	893.6 W (220V/50Hz) ( with 770 W PD connected @ 25 °C) 942.7 W (110V/60Hz) ( with 770 W PD connected @ 25 °C)	
	Max Heat Dissipation	3047.18 BTU/hr (220V/50Hz) ( with 770 W PD connected @ 25 °C) 3214.61 BTU/hr (110V/60Hz) ( with 770 W PD connected @ 25 °C)	
	Standby Power Consumption	23.7 W (220V/50Hz @ 25 °C) 24.4 W (110V/60Hz @ 25 °C)	
	Fan Quantity	3	
	Airflow	Left-to-right	
	Noise	Max	56.9 dBA @ 1 m (100% load, 40 °C ambient) 53.4 dBA @ 1 m (100% load, 25 °C ambient)
		Typical	41.0 dBA @ 1 m (100% system load, 385 W PoE load, 25°C ambient)
		Min	39.2 dBA @ 1 m (100% system load, PoE load <150 W, 25°C ambient)
	Surge Protection	Service port: ±6 kV in common mode Power port: ±6 kV in differential mode; ±6 kV in common mode	
	ESD Protection	Air: ±15 kV, Contact: ±8 kV	
	MTBF	439,858 h @ 25 °C	
	Dimensions (W x D x H)	17.3 × 13.0 × 1.7 in (440 × 330 × 44 mm)	
	Net Weight	5.7 kg (12.57 lbs)	
	Installation	Rackmount	
	Operating Temperature	-5 °C to 40 °C (23 °F to 104 °F)	
Storage Temperature	-40 °C to 70 °C (-40 °F to 158 °F)		
Operation Humidity	10% to 90% RH, non-condensing		
Storage Humidity	5% to 90% RH, non-condensing		
Certification	CE, FCC, UL, RoHS		

\*\*Only one 10G RJ45 SFP+ module (SM5310-T) can be inserted at a time.

# Software Features<sup>^</sup>

Model		SG5452XMPP V1.20	
System	System Info	<ul style="list-style-type: none"> <li>• Device Description                             <ul style="list-style-type: none"> <li>- Name</li> <li>- Location</li> <li>- System Contact</li> </ul> </li> <li>• System Time                             <ul style="list-style-type: none"> <li>- Manual</li> <li>- Synchronize with PC's Clock</li> <li>- SNTP Client</li> </ul> </li> <li>• DST                             <ul style="list-style-type: none"> <li>- Predefined Mode</li> <li>- Recurring Mode</li> <li>- Date Mode</li> </ul> </li> </ul>	<ul style="list-style-type: none"> <li>• LED                             <ul style="list-style-type: none"> <li>- LED on/off</li> </ul> </li> <li>• System IP                             <ul style="list-style-type: none"> <li>- Static IP/DHCP/BOOTP</li> </ul> </li> <li>• System IPv6                             <ul style="list-style-type: none"> <li>- Link-local Address Config</li> <li>- Global Address Autoconfig via RA Message</li> <li>- Global Address Autoconfig via DHCPv6 Server</li> <li>- Add a Global Address Manually</li> </ul> </li> </ul>
	User Management	<ul style="list-style-type: none"> <li>• User Settings</li> <li>• Access Level: 4 levels</li> </ul>	<ul style="list-style-type: none"> <li>• Password Recovery Settings</li> </ul>
	System Tools	<ul style="list-style-type: none"> <li>• Config Restore/Backup                             <ul style="list-style-type: none"> <li>- Web: HTTP</li> <li>- CLI: TFTP/USB</li> </ul> </li> <li>• Firmware Upgrade                             <ul style="list-style-type: none"> <li>- Web: HTTP</li> <li>- CLI: TFTP/USB</li> </ul> </li> </ul>	<ul style="list-style-type: none"> <li>• System Reboot</li> <li>• System Reset</li> <li>• Boot Config (Dual Image)</li> <li>• Reboot Schedule</li> </ul>
	Access Security	<ul style="list-style-type: none"> <li>• Access Control Config                             <ul style="list-style-type: none"> <li>- IP-based</li> <li>- MAC-based</li> <li>- Port-based</li> <li>- IPv6-based</li> </ul> </li> <li>• HTTP Config                             <ul style="list-style-type: none"> <li>- Enable/Disable</li> <li>- Session Config</li> <li>- Access User Number</li> <li>- Port Setting</li> </ul> </li> <li>• SSL Config                             <ul style="list-style-type: none"> <li>- SSLv3/TLSv1 Enable/Disable</li> <li>- CipherSuite Config</li> <li>- IPv6 SSL</li> </ul> </li> </ul>	<ul style="list-style-type: none"> <li>• SSH Config                             <ul style="list-style-type: none"> <li>- Enable/Disable</li> <li>- v2</li> <li>- Encryption Algorithm</li> <li>- Data Integrity Algorithm</li> <li>- Port Setting</li> <li>- IPv6 SSH</li> </ul> </li> <li>• Telnet Config                             <ul style="list-style-type: none"> <li>- Enable/Disable</li> <li>- Port Setting</li> <li>- IPv6 Telnet</li> </ul> </li> <li>• Console Port                             <ul style="list-style-type: none"> <li>- Baud Rate setting</li> </ul> </li> </ul>
	Stack	<ul style="list-style-type: none"> <li>• Stack Setting</li> <li>• Stack-port LAG: up to 4 groups, each group supports a maximum of all stackable-ports</li> </ul>	<ul style="list-style-type: none"> <li>• Stackable Devices: up to 4 devices</li> <li>• Stack MAC Address Switching Delay</li> <li>• Multi-active Detection (MAD)</li> </ul>
	SDM Template	<ul style="list-style-type: none"> <li>• Default Template                             <ul style="list-style-type: none"> <li>- IPv4 ACL Rules: 300 entries</li> <li>- MAC ACL Rules: 600 entries</li> <li>- Combined ACL Rules: 300 entries</li> <li>- IPv6 ACL Rules: 0 entries</li> <li>- IPv4 Source Guard: 127 entries</li> <li>- IPv6 Source Guard: 0 entries</li> </ul> </li> <li>• IPv4 Access                             <ul style="list-style-type: none"> <li>- IPv4 ACL Rules: 0 entries</li> <li>- MAC ACL Rules: 600 entries</li> <li>- Combined ACL Rules: 600 entries</li> <li>- IPv6 ACL Rules: 0 entries</li> <li>- IPv4 Source Guard: 127 entries</li> <li>- IPv6 Source Guard: 0 entries</li> </ul> </li> <li>• IPv6 Access                             <ul style="list-style-type: none"> <li>- IPv4 ACL Rules: 0 entries</li> <li>- MAC ACL Rules: 600 entries</li> <li>- Combined ACL Rules: 0 entries</li> <li>- IPv6 ACL Rules: 250 entries</li> <li>- IPv4 Source Guard: 0 entries</li> <li>- IPv6 Source Guard: 127 entries</li> </ul> </li> </ul>	<ul style="list-style-type: none"> <li>• Omada                             <ul style="list-style-type: none"> <li>- IPv4 ACL Rules: 0 entries</li> <li>- MAC ACL Rules: 0 entries</li> <li>- Combined ACL Rules: 400 entries</li> <li>- IPv6 ACL Rules: 200 entries</li> <li>- IPv4 Source Guard: 0 entries</li> <li>- IPv6 Source Guard: 0 entries</li> </ul> </li> </ul>
	Time Range	<ul style="list-style-type: none"> <li>• Time Range Config</li> </ul>	<ul style="list-style-type: none"> <li>• Holiday Config</li> </ul>
	File System	<ul style="list-style-type: none"> <li>• File Operation</li> <li>• TFTP</li> <li>• USB Storage</li> </ul>	

# Software Features<sup>^</sup>

Model		SG5452XMPP V1.20	
L2 Features	Port	<ul style="list-style-type: none"> <li>• Port config                             <ul style="list-style-type: none"> <li>- Speed and Duplex</li> <li>- Flow Control (802.3x)</li> <li>- Jumbo Frame: 1518-9216 KB</li> </ul> </li> <li>• Port Mirror                             <ul style="list-style-type: none"> <li>- Ingress (Many to One)</li> <li>- Egress (Many to One)</li> <li>- RSPAN</li> </ul> </li> </ul>	<ul style="list-style-type: none"> <li>• Port Security                             <ul style="list-style-type: none"> <li>- Learn mode: Dynamic/Static/Permanent/Sticky</li> <li>- Port Max Learned MAC: 64</li> <li>- Exceed Max Learned Trap</li> </ul> </li> <li>• Port Isolation</li> <li>• Loopback Detection                             <ul style="list-style-type: none"> <li>- Alert</li> <li>- Port Based</li> <li>- VLAN Based</li> </ul> </li> </ul>
	Digital Diagnostic Monitoring (DDM)		
	LAG	<ul style="list-style-type: none"> <li>• Hash Algorithm: SRC MAC/DST MAC/SRC MAC + DST MAC/SRC IP/DST IP/SRC IP + DST IP</li> </ul>	<ul style="list-style-type: none"> <li>• Static LAG</li> <li>• LACP (802.3ad)</li> <li>• Up to 64 LAGs, up to 8 ports per LAG</li> </ul>
	Traffic Monitor	<ul style="list-style-type: none"> <li>• TX Packets/Bytes</li> <li>• RX Packets/Bytes</li> <li>• TX Unicast/Multicast/Broadcast</li> <li>• RX Unicast/Multicast/Broadcast</li> </ul>	<ul style="list-style-type: none"> <li>• TX Errors</li> <li>• RX Errors</li> <li>• TX/RX Packet Size Analysis</li> </ul>
	MAC Address	<ul style="list-style-type: none"> <li>• MAC Address Table: 16K entries</li> <li>• IVL/SVL: IVL</li> <li>• Create Static Unicast Address</li> </ul>	<ul style="list-style-type: none"> <li>• Bind Dynamic Address</li> <li>• Create Filtering Address</li> <li>• MAC Notification Settings</li> </ul>
	VLAN	<ul style="list-style-type: none"> <li>• 802.1Q VLAN: 4K VLANs</li> <li>• MAC VLAN: 60 entries</li> <li>• Protocol VLAN (IEEE 802.1v)                             <ul style="list-style-type: none"> <li>- 16 Protocol VLAN Template</li> <li>- 12 Protocol VLAN Group</li> </ul> </li> </ul>	<ul style="list-style-type: none"> <li>• QinQ (VLAN VPN): 256 entries</li> <li>• Private VLAN</li> <li>• GVRP</li> </ul>
	L2 Multicast	<ul style="list-style-type: none"> <li>• Max Multicast Groups: 2000 (IGMP Snooping &amp; MLD Snooping &amp; MVR)</li> <li>• IGMP Snooping                             <ul style="list-style-type: none"> <li>- IGMP V1/V2/V3</li> <li>- Report Message Suppression</li> <li>- Fast Leave</li> <li>- Unknown Multicast Discard</li> <li>- Static Multicast Groups</li> <li>- IGMP Snooping Querier</li> <li>- IGMP Packet Statistics</li> <li>- IGMP Authentication</li> <li>- Multicast Filtering: 256 profiles and 16 entries per profile</li> <li>- Router Port Setting: Static Router Port/Forbidden Router Port</li> </ul> </li> <li>• MVR</li> </ul>	<ul style="list-style-type: none"> <li>• Multicast Listener Discovery (MLD) Snooping                             <ul style="list-style-type: none"> <li>- MLD V1/V2</li> <li>- Report Message Suppression</li> <li>- Unknown Multicast Discard</li> <li>- Fast Leave</li> <li>- Static Multicast Groups</li> <li>- MLD Snooping Querier</li> <li>- MLD Packet Statistics</li> <li>- Multicast Filtering: 256 profiles and 16 entries per profile</li> <li>- Router Port Setting: Static Router Port/Forbidden Router Port</li> </ul> </li> </ul>
	STP	<ul style="list-style-type: none"> <li>• STP (802.1d)</li> <li>• RSTP (802.1w)</li> <li>• MSTP (802.1s)</li> <li>• MSTI instances: 16</li> </ul>	<ul style="list-style-type: none"> <li>• STP Security                             <ul style="list-style-type: none"> <li>- Loop Protect</li> <li>- Root Protect</li> <li>- TC Protect</li> <li>- BPDU Protect</li> <li>- BPDU Filter</li> </ul> </li> </ul>
	LLDP (802.1ab)	<ul style="list-style-type: none"> <li>• Local Info</li> <li>• Neighbor Info</li> </ul>	<ul style="list-style-type: none"> <li>• Statistic Info</li> <li>• LLDP-MED</li> </ul>
	L2PT		
	PPPoE ID Insertion	<ul style="list-style-type: none"> <li>• Circuit-ID Type</li> </ul>	<ul style="list-style-type: none"> <li>• Remote-ID</li> </ul>
	ERPS	<ul style="list-style-type: none"> <li>• Ring: 16</li> </ul>	
	Virtual MAC		
	Sticky MAC		

## Software Features<sup>^</sup>

Model		SG5452XMPP V1.20		
L3 Features	IPv4 Interfaces: 512 (shared with IPv6 Interfaces) IPv6 Interfaces: 512 (shared with IPv4 Interfaces)			
	IPv4 Static Routes: 512 (shared with IPv6 Static Routes) IPv6 Static Routes: 128 (shared with IPv4 Static Routes)			
	IPv4 Host Routes: 1024 (shared with IPv4 Host Routes) IPv6 Host Routes: 890 (shared with IPv4 Host Routes)			
	IPv4 Network Routes: 1796 (shared with IPv6 Network Routes) IPv6 Network Routes: 450 (shared with IPv4 Network Routes)			
	IPv4/IPv6 dual stack			
	ARP	<ul style="list-style-type: none"> <li>• Static ARP: 512</li> <li>• Dynamic ARP: 2048</li> </ul>		
	ND: 3600			
	DHCP	<ul style="list-style-type: none"> <li>• DHCP Server                             <ul style="list-style-type: none"> <li>- IP Pools: 64</li> <li>- Max Leases: 8000</li> <li>- Manual Binding Entries: 1000</li> <li>- Exclude IP range Entries: 100</li> </ul> </li> </ul>	<ul style="list-style-type: none"> <li>• DHCP Relay</li> <li>• DHCP L2 Relay</li> <li>• DHCPv6 Relay</li> <li>• DHCPv6 L2 Relay</li> </ul>	
	VRRP	<ul style="list-style-type: none"> <li>• VRRP V2/V3</li> <li>• VRRP Instance: 64</li> </ul>		
	OSPF	<ul style="list-style-type: none"> <li>• OSPFv2                             <ul style="list-style-type: none"> <li>- OSPF Process: 4</li> </ul> </li> </ul>	<ul style="list-style-type: none"> <li>• OSPFv3                             <ul style="list-style-type: none"> <li>- OSPFv3 Instance: 1</li> </ul> </li> </ul>	
RIP	<ul style="list-style-type: none"> <li>• RIPv1/v2</li> </ul>	<ul style="list-style-type: none"> <li>• RIPng</li> </ul>		
QoS	Class of Service	<ul style="list-style-type: none"> <li>• Priority Queues: 8 Queues</li> <li>• Port Priority</li> <li>• 802.1P Priority</li> <li>• DSCP/ToS Priority</li> </ul>	<ul style="list-style-type: none"> <li>• Priority Schedule Mode: SP/WRR per Queue</li> <li>• Queue Weight Config: For WRR/SP+WRR Mode</li> </ul>	
	Bandwidth Control	<ul style="list-style-type: none"> <li>• Rate Limit                             <ul style="list-style-type: none"> <li>- Ingress Rate Limit</li> <li>- Egress Rate Limit</li> <li>- Rate Limit Grade: 64kbps</li> </ul> </li> </ul>	<ul style="list-style-type: none"> <li>• Storm Control                             <ul style="list-style-type: none"> <li>- Control Mode: kbps/ratio</li> <li>- Broadcast</li> <li>- Multicast</li> <li>- Unknown Unicast</li> </ul> </li> </ul>	
	Voice VLAN	<ul style="list-style-type: none"> <li>• OUI entries: 64</li> </ul>		

## Software Features<sup>^</sup>

Model		SG5452XMPP V1.20		
Network Security	IP-MAC Binding	<ul style="list-style-type: none"> <li>• Binding entries: 1024 entries</li> <li>• Manual Binding</li> </ul>	<ul style="list-style-type: none"> <li>• ARP Scanning</li> <li>• DHCP Snooping</li> </ul>	
	IPv6-MAC Binding	<ul style="list-style-type: none"> <li>• Binding entries: 1024 entries</li> <li>• Manual Binding</li> </ul>	<ul style="list-style-type: none"> <li>• DHCPv6 Snooping</li> <li>• ND Snooping</li> </ul>	
	Dynamic ARP Inspection (DAI)	<ul style="list-style-type: none"> <li>• ARP Detect entries: 1024 entries</li> <li>• ARP Detect</li> </ul>	<ul style="list-style-type: none"> <li>• ARP Defend</li> <li>• ARP Statistics</li> </ul>	
	ND Detection	<ul style="list-style-type: none"> <li>• ND Detection entries: 1024 entries</li> <li>• ND Detect</li> </ul>	<ul style="list-style-type: none"> <li>• ND Statistics</li> </ul>	
	IP Source Guard	<ul style="list-style-type: none"> <li>• IP Source Guard entries</li> <li>- Default SDM Template: 127</li> <li>- IPv4 SDM Template: 127</li> <li>- IPv6 SDM Template: 0</li> </ul>	<ul style="list-style-type: none"> <li>• Security Type</li> <li>- Source IP</li> <li>- Source IP + Source MAC</li> </ul>	
	IPv6 Source Guard	<ul style="list-style-type: none"> <li>• IPv6 Source Guard entries</li> <li>- Default SDM Template: 0</li> <li>- IPv4 SDM Template: 0</li> <li>- IPv6 SDM Template: 127</li> </ul>	<ul style="list-style-type: none"> <li>• Security Type</li> <li>- Source IPv6</li> <li>- Source IPv6 + Source MAC</li> </ul>	
	RA Guard: 30 entries			
	DoS Defend	<ul style="list-style-type: none"> <li>• Scan SYNFIN</li> <li>• Xmascan</li> <li>• NULL Scan</li> </ul>	<ul style="list-style-type: none"> <li>• SYN sPort less 1024</li> <li>• Ping Flooding</li> <li>• SYN/SYN-ACK Flooding</li> </ul>	
	DHCP Filter	<ul style="list-style-type: none"> <li>• DHCPv4 Filter</li> <li>- Legal Server entries: 200</li> </ul>	<ul style="list-style-type: none"> <li>• DHCPv6 Filter</li> <li>- Legal Server entries: 200</li> </ul>	
	802.1x	<ul style="list-style-type: none"> <li>• Control Type</li> <li>- Port Based</li> <li>- MAC Based</li> <li>• Auth Method: PAP/EAP-MD5/EAP-TLS/EAP-TTLS/EAP-PEAP</li> </ul>	<ul style="list-style-type: none"> <li>• Radius Authentication</li> <li>• Radius Accounting</li> <li>• Radius Server Load Balancing</li> <li>• RADSEC</li> <li>• Guest VLAN</li> <li>• VLAN Assignment</li> <li>• MAB</li> </ul>	
	Authentication, Authorization, Accounting (AAA)			
	ACL	<ul style="list-style-type: none"> <li>• Time-Range</li> <li>- Time Slice</li> <li>- Week Time-Range</li> <li>- Absolute Time-Range</li> <li>- Holiday</li> <li>• MAC ACL</li> <li>• IP ACL</li> <li>• Combined ACL</li> <li>• IPv6 ACL</li> <li>• Rule Operation</li> <li>- Permit</li> <li>- Deny</li> <li>• Policy Action</li> <li>- Mirror</li> <li>- Rate Limit</li> <li>- Redirect</li> <li>- QoS Remark</li> <li>• Binding</li> <li>- Port Binding</li> <li>- VLAN Binding</li> </ul>	<ul style="list-style-type: none"> <li>• Default Template</li> <li>- IPv4 ACL Rules: 300 entries</li> <li>- MAC ACL Rules: 600 entries</li> <li>- Combined ACL Rules: 300 entries</li> <li>- IPv6 ACL Rules: 0 entries</li> <li>• IPv4 Access</li> <li>- IPv4 ACL Rules: 0 entries</li> <li>- MAC ACL Rules: 600 entries</li> <li>- Combined ACL Rules: 600 entries</li> <li>- IPv6 ACL Rules: 0 entries</li> <li>• IPv6 Access</li> <li>- IPv4 ACL Rules: 0 entries</li> <li>- MAC ACL Rules: 600 entries</li> <li>- Combined ACL Rules: 0 entries</li> <li>- IPv6 ACL Rules: 250 entries</li> <li>• Omada</li> <li>- IPv4 ACL Rules: 0 entries</li> <li>- MAC ACL Rules: 0 entries</li> <li>- Combined ACL Rules: 400 entries</li> <li>- IPv6 ACL Rules: 200 entries</li> </ul>	

## Software Features<sup>^</sup>

Model		SG5452XMPP V1.20		
Maintenance	System Monitor	<ul style="list-style-type: none"> <li>• CPU Monitor</li> <li>• Memory Monitor</li> </ul>		
	sFlow			
	Operation Administration and Maintenance (OAM)	<ul style="list-style-type: none"> <li>• EFM                             <ul style="list-style-type: none"> <li>- Link Monitoring</li> <li>- Remote Failure Indication Config</li> <li>- Statistics</li> </ul> </li> </ul>		
	DLDP			
	Dying Gasp			
	SNMP	<ul style="list-style-type: none"> <li>• SNMP Version: v1/v2c/v3</li> <li>• SNMP Config                             <ul style="list-style-type: none"> <li>- Global Config</li> <li>- SNMP View</li> <li>- SNMP Group</li> <li>- SNMP User</li> <li>- SNMP Community</li> </ul> </li> </ul>	<ul style="list-style-type: none"> <li>• Notification                             <ul style="list-style-type: none"> <li>- Trap: IPv4/IPv6</li> <li>- Inform: IPv4/IPv6</li> </ul> </li> <li>• RMON v1</li> <li>• Public MIBs</li> <li>• Private MIBs</li> </ul>	
	MIBs	<ul style="list-style-type: none"> <li>• MIB II (RFC1213)</li> <li>• Interface MIB (RFC2233)</li> <li>• Ethernet Interface MIB (RFC1643)</li> <li>• Bridge MIB (RFC1493)</li> <li>• P/Q-Bridge MIB (RFC2674)</li> <li>• RMON MIB (RFC2819)</li> </ul>	<ul style="list-style-type: none"> <li>• RADIUS Accounting Client MIB (RFC2620)</li> <li>• RADIUS Authentication Client MIB (RFC2618)</li> <li>• Remote Ping, Traceroute MIB (RFC2925)</li> <li>• Support TP-Link Private MIB</li> </ul>	
	IEEE 802.3az Energy Efficient Ethernet (EEE)			
	DHCP Auto Install			
	Log	<ul style="list-style-type: none"> <li>• Display/Filtering</li> <li>• Severity Level</li> <li>• Save to Flash</li> </ul>	<ul style="list-style-type: none"> <li>• Remote Host</li> <li>• Backup Log</li> </ul>	
	Device Diagnostics	<ul style="list-style-type: none"> <li>• Cable Test</li> </ul>		
Network Diagnostics	<ul style="list-style-type: none"> <li>• Ping</li> <li>• IPv6 Ping</li> </ul>	<ul style="list-style-type: none"> <li>• Tracert</li> <li>• IPv6 Tracert</li> </ul>		
Others	Index			
	Show running config	<ul style="list-style-type: none"> <li>• Use the show running config command to view device's running status via telnet.</li> <li>• Configuration File: Import/Export/Edit</li> </ul>		
Omada SDN Controller	Omada SDN controller			

## Others

Package Content	<ul style="list-style-type: none"> <li>• SG5452XMPP V1.20 Switch</li> <li>• Power Cord</li> <li>• Console Cable</li> <li>• Rackmount Kits</li> <li>• Rubber Feet</li> <li>• Installation Guide</li> </ul>
System Requirements	Microsoft® Windows® 98SE, NT, 2000, XP, Vista™ or Windows 7/8/10/11, MAC® OS, NetWare®, UNIX® or Linux.

# Ordering Information

Host Switch	
Model	Description
SG5452XMPP V1.20	Omada 48-Port Gigabit Stackable Lite L3 Managed PoE++ Switch with 4× 10G Slots

SFP/SFP+ Modules	
Model	Description
SM311LS	Gigabit SFP module, Single-mode, LC interface, Up to 20km distance
SM311LM	Gigabit SFP module, Multi-mode, LC interface, Up to 550m distance
SM321A	Gigabit WDM Bi-Directional SFP Module, single-mode, LC connector, TX: 1550 nm/RX: 1310 nm, 20 km
SM321A-2	Gigabit WDM Bi-Directional SFP Module, single-mode, LC connector, TX: 1550 nm/RX: 1310 nm, 2 km
SM321B	Gigabit WDM Bi-Directional SFP Module, single-mode, LC connector, TX: 1310 nm/RX: 1550 nm, 20 km
SM321B-2	Gigabit WDM Bi-Directional SFP Module, single-mode, LC connector, TX: 1310 nm/RX: 1550 nm, 2 km
SM5110-LR	10GBase-LR SFP+ LC Transceiver, single-mode, LC connector, 1310nm, 10 km
SM5110-SR	10GBase-SR SFP+ LC Transceiver, multi-mode, LC connector, 850nm, 300 m
SM5110LSA-10	10GBase-BX WDM Bi-Directional SFP+ Module, single-mode, LC connector, TX: 1330 nm/RX: 1270 nm, 10 km
SM5110LSB-10	10GBase-BX WDM Bi-Directional SFP+ Module, single-mode, LC connector, TX: 1270 nm/RX: 1330 nm, 10 km

RJ45 SFP/SFP+ Modules	
Model	Description
SM331T	1000BASE-T RJ45 SFP Module
SM5310-T	10GBASE-T RJ45 SFP+ Module

MC Series Media Converter	
Model	Description
MC420L	10G Multi-Gigabit SFP+ Media Converter, up to 100 m, chassis mountable
MC220L	Gigabit SFP Media Converter, up to 100 m, chassis mountable
MC210CS	Gigabit Single-Mode Media Converter, up to 20 km, chassis mountable
MC211CS-20	Gigabit WDM Media Converter, up to 20 km, chassis mountable
MC212CS-20	Gigabit WDM Media Converter, up to 20 km, chassis mountable
MC211CS-2	Gigabit WDM Media Converter, up to 2 km, chassis mountable
MC212CS-2	Gigabit WDM Media Converter, up to 2 km, chassis mountable
MC200CM	Gigabit Multi-Mode Media Converter, up to 550 m, chassis mountable

Direct Attach Cable	
Model	Description
SM5220-1M	1 Meter 10G SFP+ Direct Attach Cable
SM5220-3M	3 Meters 10G SFP+ Direct Attach Cable

\*PoE budget calculations are based on laboratory testing. The actual PoE power budget is not guaranteed and will vary due to client limitations and environmental factors.

†These functions require the use of the Omada SDN Controller. Zero-Touch Provisioning requires the use of the Omada Cloud-Based Controller.

\*Some models featured in this guide may be unavailable in your country or region. Visit Omada website for local sales information: <https://www.omadanetworks.com/>.

Specifications are subject to change without notice. All the brands and product names are trademarks or registered trademarks of their respective holders. © 2026 TP-Link